

ALAMANDA
P O L Y M E R S

☎ : 877-257-6597

☎ : 256-489-4529

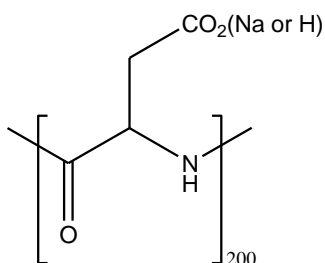
✉ contact@alamanda-polymers.com

Specification Sheet

Chemical name: poly(L-aspartic acid sodium salt)

CAS number: 34345-47-6

Catalog item: PLD₂₀₀, average MW 27000



Catalog number: 000-D200

Appearance	White to faint-yellow solid
Solubility	Clear solution at 50 mg/mL of water
Identify by NMR	Conforms
Quantitative analysis (%)	Na=13-17
PDI by GPC	1.00-1.20
MN by NMR	24700-30100
DP _n by NMR	180-220