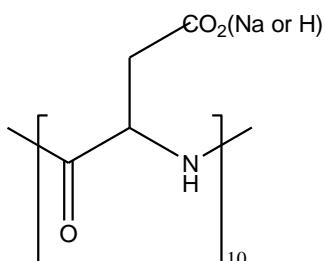


Specification Sheet

Chemical name: poly(L-aspartic acid sodium salt)

CAS number: 34345-47-6

Catalog item: PLD₁₀, average MW 1400



Catalog number: 000-D010

Appearance	White to faint-yellow solid
Solubility	Clear solution at 50 mg/mL of water
Identify by NMR	Conforms
Quantitative analysis (%)	Na=12-17
PDI by GPC	1.00-1.20
MN by NMR	1100-1600
DP _n by NMR	8-12