

**ALAMANDA**  
P O L Y M E R S

☎ : 877-257-6597

☎ : 256-489-4529

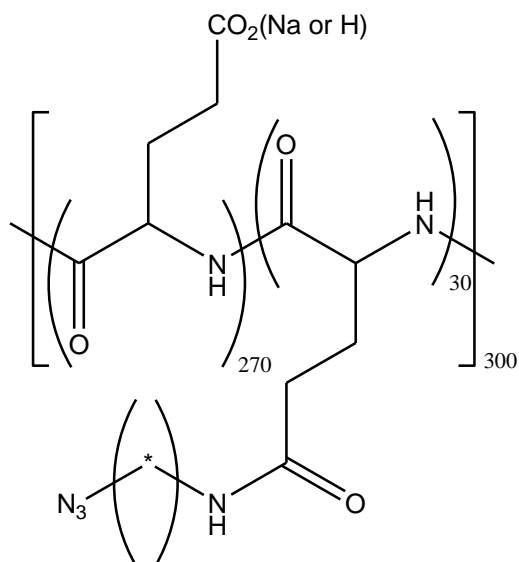
contact@alamanda-polymers.com

## Specification Sheet

Chemical name: poly(L-glutamic acid sodium salt)-graft-(N-azidoalkyl)

CAS number: unknown

Catalog item: PLE<sub>300</sub>-g-AZ<sub>10</sub>, average MW 51000



Catalog number: 000-E300-g-AZ010

Appearance	White to faint-yellow solid
Solubility	Clear solution at 50 mg/mL of water
Identify by NMR	Conforms
PDI of starting PLE by GPC	1.00-1.20
MN by NMR	44700-57000
DP <sub>n</sub> by NMR	270-330
Azido substitution (%)	8-12