

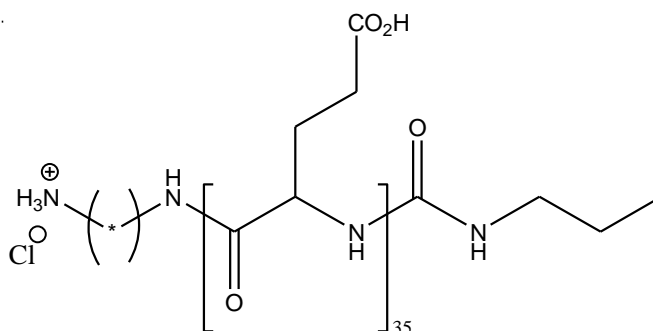


## Specification Sheet

Chemical name: amino-poly(L-glutamic acid)

CAS number: 25513-46-6

Catalog item: NH<sub>2</sub>-PLE<sub>35</sub>, average MW 4700



Catalog number: 000-NE035

Appearance	White to faint-yellow solid
Solubility	Clear solution at 10 mg/mL of DMF
Identify by NMR	Conforms
PDI by GPC	1.00-1.20
MN by NMR	4200-5300
DP <sub>n</sub> by NMR	31-39
Amino substitution (%)	100