



ALAMANDA
POLYMERS

☎ : 877-257-6597

☎ : 256-489-4529

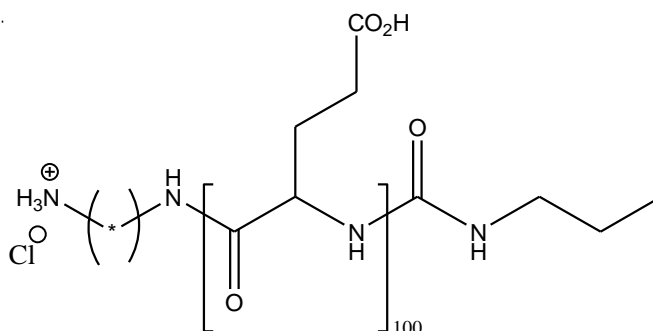
contact@alamanda-polymers.com

Specification Sheet

Chemical name: amino-poly(L-glutamic acid)

CAS number: 25513-46-6

Catalog item: NH₂-PLE₁₀₀, average MW 13000



Catalog number: 000-NE100

Appearance	White to faint-yellow solid
Solubility	Clear solution at 10 mg/mL of DMF
Identify by NMR	Conforms
PDI by GPC	1.00-1.20
MN by NMR	11800-14400
DP _n by NMR	90-110
Amino substitution (%)	100