

ALAMANDA
POLYMERS

☎ : 877-257-6597

☎ : 256-489-4529

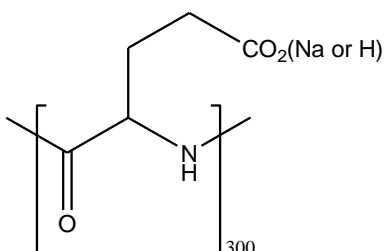
contact@alamanda-polymers.com

Specification Sheet

Chemical name: poly(D,L-glutamic acid sodium salt)

CAS number: unknown

Catalog item: PRE₃₀₀, average MW 45000



Catalog number: 000-RE300

Appearance	White to faint-yellow solid
Solubility	Clear solution at 50 mg/mL of water
Identify by NMR	Conforms
Quantitative analysis (%)	Na=11-15
PDI by GPC	1.00-1.20
MN by NMR or viscosity	40800-49800
DP _n by NMR or viscosity	270-330