

ALAMANDA
POLYMERS

☎ : 877-257-6597

☎ : 256-489-4529

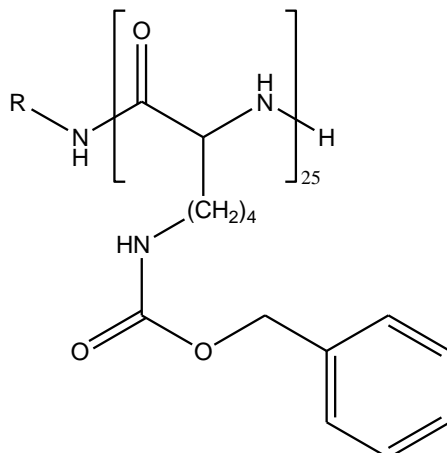
✉ contact@alamanda-polymers.com

Specification Sheet

Chemical name: poly(N_{ϵ} -carbobenzoxy-L-lysine)

CAS number: 25931-47-9

Catalog item: PZLK₂₅, average MW 6600



Catalog number: 000-ZK025

Appearance	White to faint-yellow solid
Solubility	Clear solution at 10 mg/mL of DMF
Identify by NMR	Conforms
PDI by GPC	1.00-1.20
MN by NMR	5800-7300
DP _n by NMR	22-28