

**ALAMANDA**  
POLYMERS

☎: 877-257-6597

☎: 256-489-4529

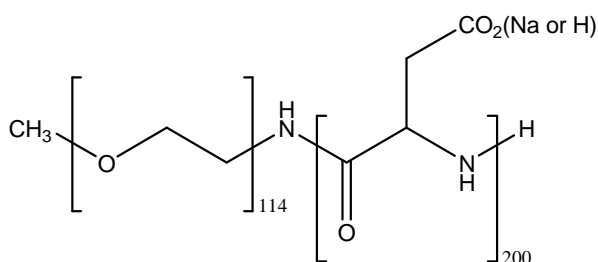
contact@alamanda-polymers.com

## Specification Sheet

Chemical name: methoxy-poly(ethylene glycol)-block-poly(L-aspartic acid sodium salt)

CAS number: unknown

Catalog item: mPEG<sub>5K</sub>-b-PLD<sub>200</sub>, average MW 32000



Catalog number: 050-D200

|                                     |                                     |
|-------------------------------------|-------------------------------------|
| Appearance                          | White to faint-yellow solid         |
| Solubility                          | Clear solution at 50 mg/mL of water |
| Identify by NMR                     | Conforms                            |
| PDI by GPC                          | 1.00-1.20                           |
| MN of starting mPEG-NH <sub>2</sub> | 4500-5500                           |
| MN by NMR                           | 29200-35600                         |
| DP <sub>n</sub> of PLD block by NMR | 180-220                             |